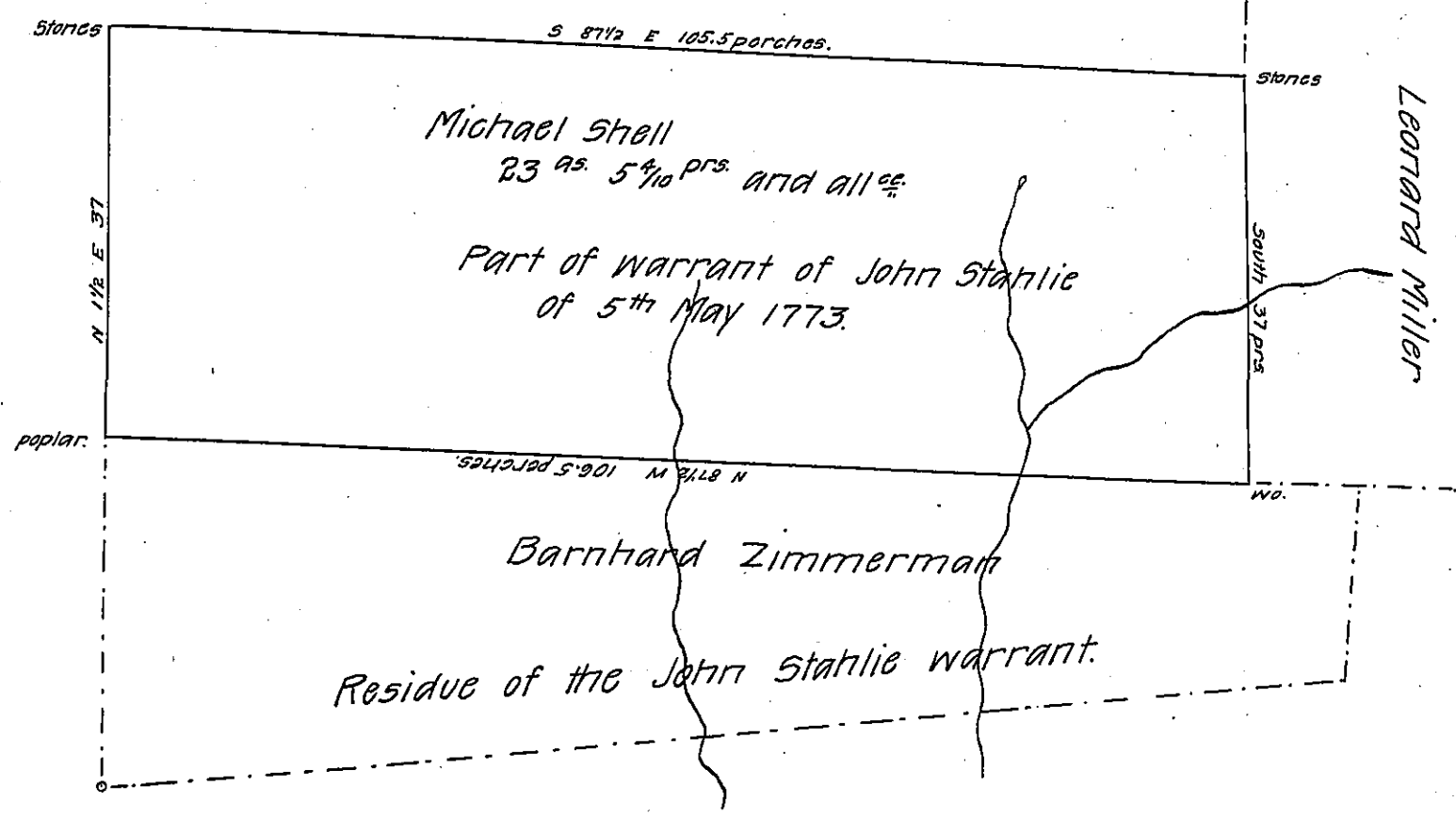


FORM NO. 1.

Land Warranted Tho. Elder & J. M. Halderman.

Land Warranted Elder & Halderman



Resurveyed April 19th 1870, for Michael Shell, the above tract of land containing twenty three acres and five and four tenths perches & allowance of 6 per cent. Situate now in Williams township, Dauphin County. It being part of a larger tract of land granted to John Stahlie, by warrant of 5th May 1773 (then in Lancaster County) and surveyed to Baltzer Ramberger, on the 24th May A. D. 1815.

Per Joel B. Ferree
Surveyor

June 20th 1870

I hereby certify that the foregoing is a correct copy of a survey filed amongst the records of the County Surveyor's Office, of this County, and that it has been examined by me and found to be correct, and approved by me.

M. R. Alleman C.S.

To Jacob M. Campbell Esqr.
Surveyor General.

IN TESTIMONY that the above is a copy of the original remaining on file in the Department of Internal Affairs of Pennsylvania, made conformably to an Act of Assembly approved the 16th day of February 1833, I have hereunto set my hand and caused the Seal of said Department to be affixed at Harrisburg, this third day of January 1908

Henry Howell
Secretary of Internal Affairs.